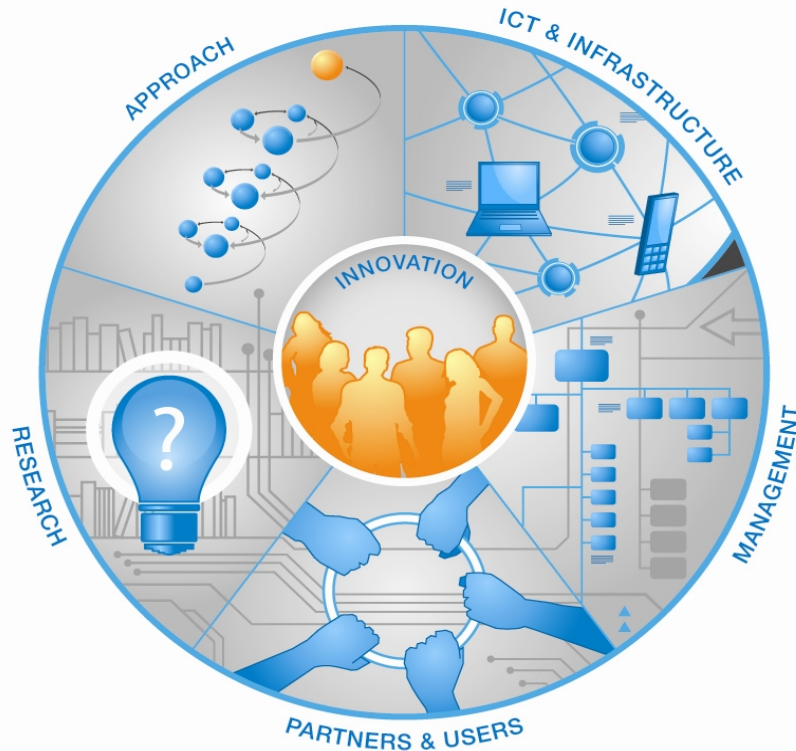


Evaluation and impact assessment of cross-border Living Labs cooperation - The Apollon KPI framework

What is a Living Lab?



Living Lab is a human-centric research and innovation environment where innovations are openly co-created and tested in real-world settings (Bergvall-Kåreborn and Ståhlbröst 2009).

Bergvall-Kåreborn, B., and A. Ståhlbröst. 2009. Living Lab: An Open and Citizen-Centric Approach for Innovation. *International Journal of Innovation and Regional Development* 1 (4): 356-370.

Living Lab Principles



- **Openness** for all project participants
- As **realistic processes** and activities as possible
- **Influence** by all project participants ,
- **Sustainability** in the services developed (users, technology, business)
- **Value** creation for all stakeholders

Cross-border Collaboration

- **What is cross-border?**
 - An activity or arrangement undertaken by two or more cooperating actors, located in different systems/countries, with the aim of transferring or exchanging (or easing the transfer/exchange of) products, services, ideas, and/or knowledge across the border which separates them
(Border = geographical, organisational, cultural etc)

Cross-border collaboration

- What is being transferred/moved or exchanged?
 - Products
 - Services
 - Knowledge
 - Resources

Cross-border collaboration

- **Reasons for cross-border collaboration:**
 - access to new markets
 - test of technology in different cultural settings
 - Increased understanding of different stakeholder perspectives related to the innovation being developed
 - access to technologies not available at home
 - achieving complementarity and economies of scale
 - increasing income and/or status
 - learning and sharing good practice
 - international positioning
 - increasing competition
 - giving a political signal
 - enhancing broader cooperation, for example for more regional integration
 - attracting EU funding

The Apollon KPI framework to support and evaluate cross-border collaboration

- The framework is based on Living Lab Key Components

- Approach
- Partners
- Technology/Infrastructure
- Research
- Management



Cross-border Evaluation - Areas

The following areas are evaluated in the project from a cross-border perspective

- **Methodologies and tools for cross-border collaboration**
- **User engagement; how they are engaged and their impact**
- **Stakeholder involvement; how they are involved and their impact as well as the project's impact on their business**
- **New partnership/collaborations/businesses**
- **Innovations; New ideas, products, services, processes**
- **Research results – articles, proposals, etc..**
- **Living Lab specific: (partnership, network, maturity, policy making)**

Example of design and questions

Approach

Theme	Measures	Value	Measurement tool (where the data stem from, e.g. deliverable number, interview etc)	Impact (% ratio of ordinary values)
Approach	No of cross-border activities			
	No of intellectual products (methodologies, know-how etc) transferred in the experiment			
	No of technology transfer activities			
	Which methods were used in the experiment? Please name and/or shortly describe the methods			

Thanks for your attention!