

SMART CAMPUS

*in support of cities sustainable
development*



Fondaterra (European Foundation for Sustainable Territories)

- **A center of Excellence on Sustainable Development of Territories**
- **Incubator of innovative projects** for sustainable development of territories
- **A dynamic of training based on a dynamic of experiment**
 - The dynamic of experiment can gradually bring up a community of players ready to embark on innovative approaches and taking into account the challenges for different types of stakeholders (economic, social, environmental, governance).
 - These experiments can lead to set up research projects

Collaborative Platform

Demand Trigger

Training and Research

Applied research
Professional training/ Training throughout life

Offer Trigger

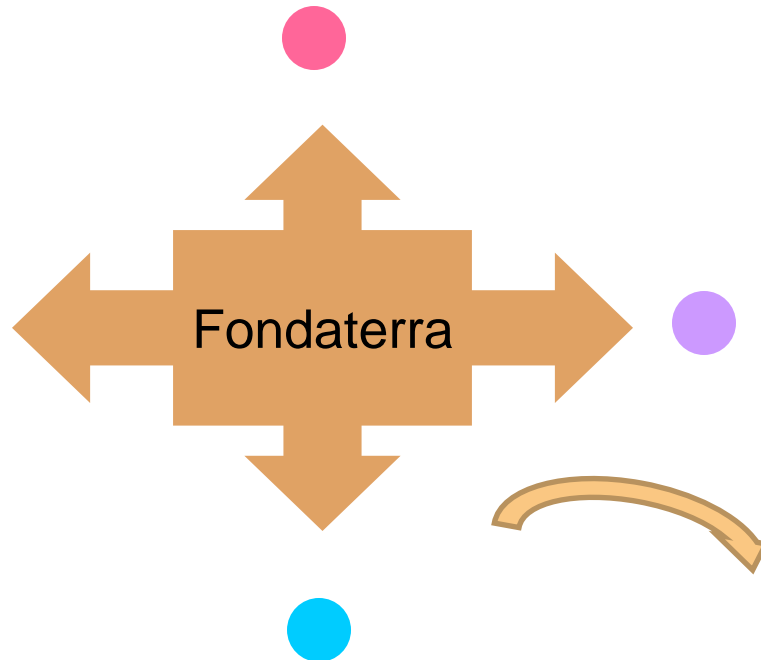
Territories

Territory sustainable development
(economic, social, , environmental) /
Attractiveness

Social and Management innovation

People

Quality of life
Employment



Small Medium Enterprises

Easier access to the market
Business organization (technics or
services)
Large enterprise synergy (financial,
products, ...)

Large Enterprises

Evolution of the offer/ Innovation /
Social and Environmental Responsibility



A multi-year program with 4 axes

**Building
Efficiency**

**Sustainable
Mobility
(territories)**

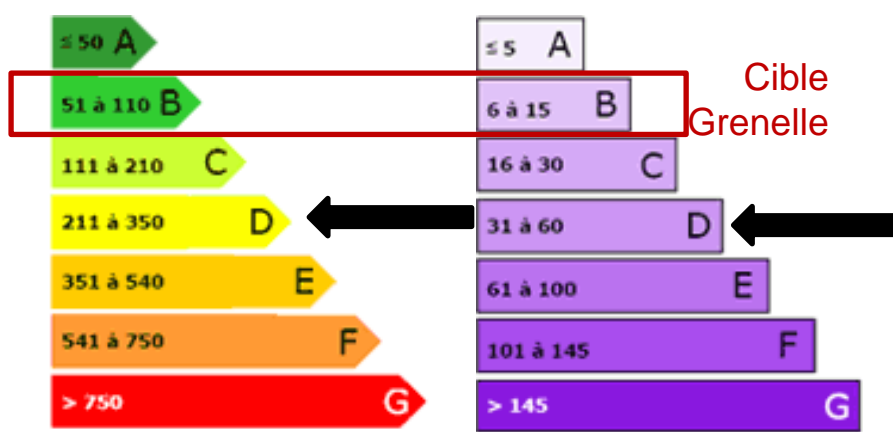
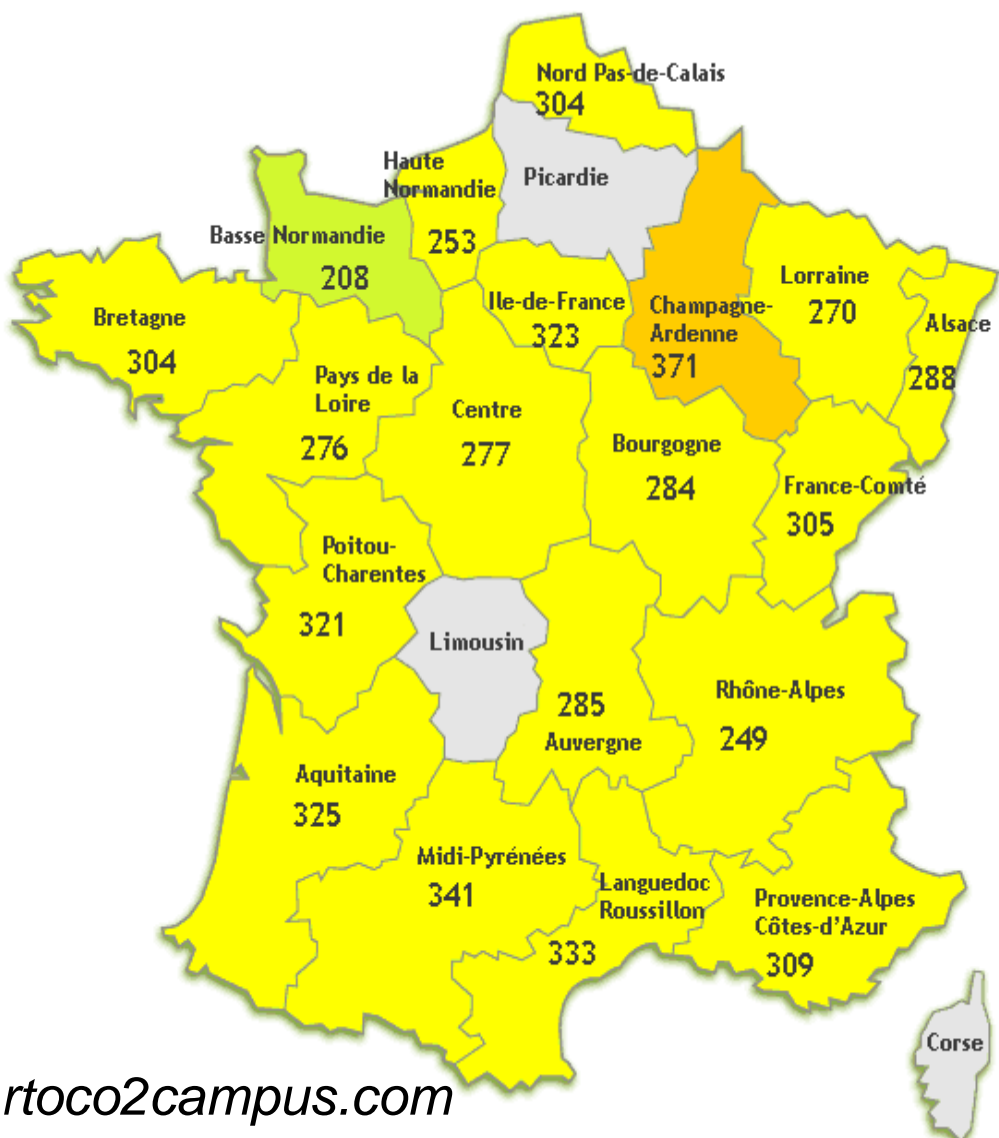
**Territorial
Ecology
& Carbon
neutral eco-
community**

**Ecological
Changes**

➤ **Commun issues:**

- ❖ Pilot Experiments
- ❖ Engineering training and support to the development of skills
- ❖ Engineering mediation and dissemination of large-scale large-scale deployment

CO2 Energy mapping of real estate 85 french universities



300 kWh.EP/m².an

31 kg.CO2/m².an

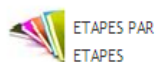
Online guide to share and develop projects



Guide méthodologique des projets d'efficacité énergétique dans les universités

Accueil > Lancement du projet > Etape 1 : Lancement du projet >

Forum Aide



ETAPES PAR ETAPES

Lancement du projet

Pré-étude

Evaluation préalable

Attribution

Contractualisation

Réalisation et suivi

> Etape 1 : Lancement du projet

Objectifs

Constituer le groupe projet.
Identifier les contributeurs.
Évaluer les attentes et objectifs.
Lancer la pré-étude.

Retours d'expérience

Le portage et l'intérêt pour la conduite du projet peuvent être divers. Il est nécessaire de partager les objectifs du projet avec les techniciens en charge de la maintenance, les services financiers, la présidence et/ou le secrétaire Général. Il faut identifier les études déjà conduites sur ce genre de sujet.

Résultats de fin d'étape :

Une prédéfinition du projet
Un porteur de projet identifié
Un soutien au niveau de la direction du campus
Un premier planning

Déplier

Déplier

FICHE MÉTHODE

Fiche méthode : [Déroulé de la phase de lancement du projet](#)

FICHES OUTIL / INFO

- Fiche outil : [Organisation en interne: quel acteur, à quel moment?](#)
- Fiche outil : [Questions pour définir son projet](#)
- Fiche outil : [Questions préliminaires](#)

FICHES RETOUR D'EXPÉRIENCE

- Fiche Rex : Paris Sud 11 / Orsay
- Fiche Rex : Université de Paris 13 Nord / Villetaneuse
- Fiche Rex : Université de Marne-la-Vallée

www.g2e-campus.fr

Energy efficiency program

- 113 550 m² S.H.O.N.
- 18 000 students
- 8 sites
- 1,1 M€/year for fluids
- Annual consumption : 21 670 MWh
 - ⇔ 207 kWh/m²
 - ⇔ 1241 kWh/user
- Sobriety: 30% saving heating, 40% water
- More than 200 000 kWh of electricity annually photovoltaic
- 900 kWh biomass



Innovation for campus

- © Fondaterra / SFR **Green TIC Campus challenge**: a true incubator for innovative products and services



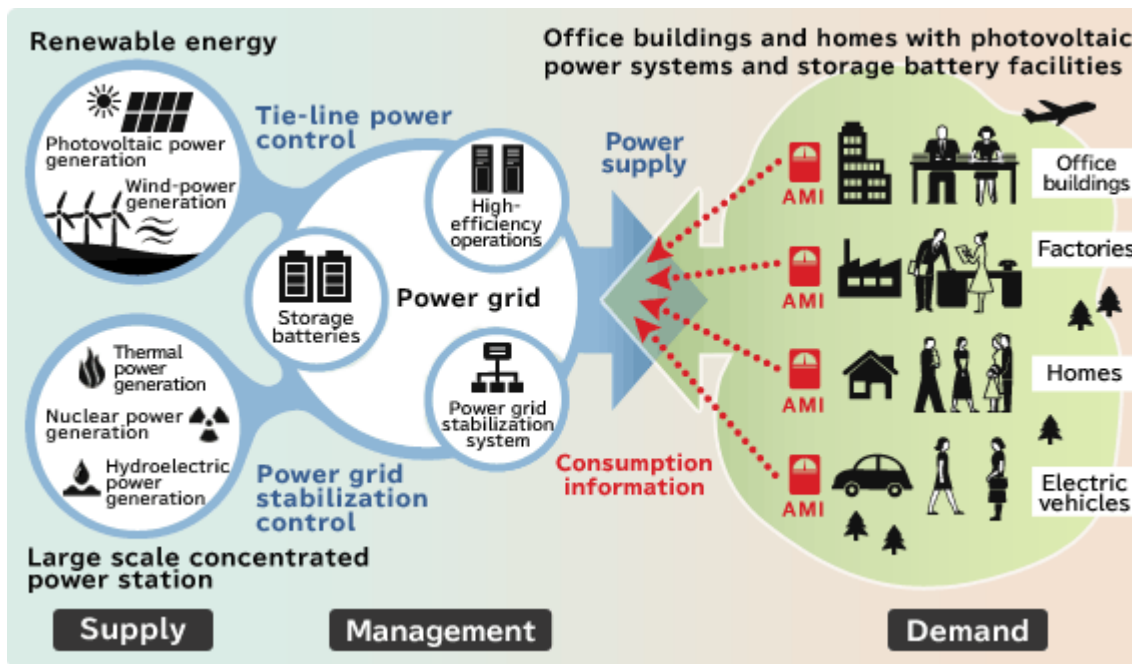
- © 2011 : <http://www.greentic-campus.com/index/projets>

- © Also integrating projects rooted in city suburbs



SmartCampus : an innovative project

- « grid » demonstrator which combines innovative local energy production and sustainable mobility carsharing



Experiment on Ecodistrict « Saint-Quentin en Yvelines Ecosystem »

- Energy efficiency and urban planning for low carbon project of eco-pole SQYES

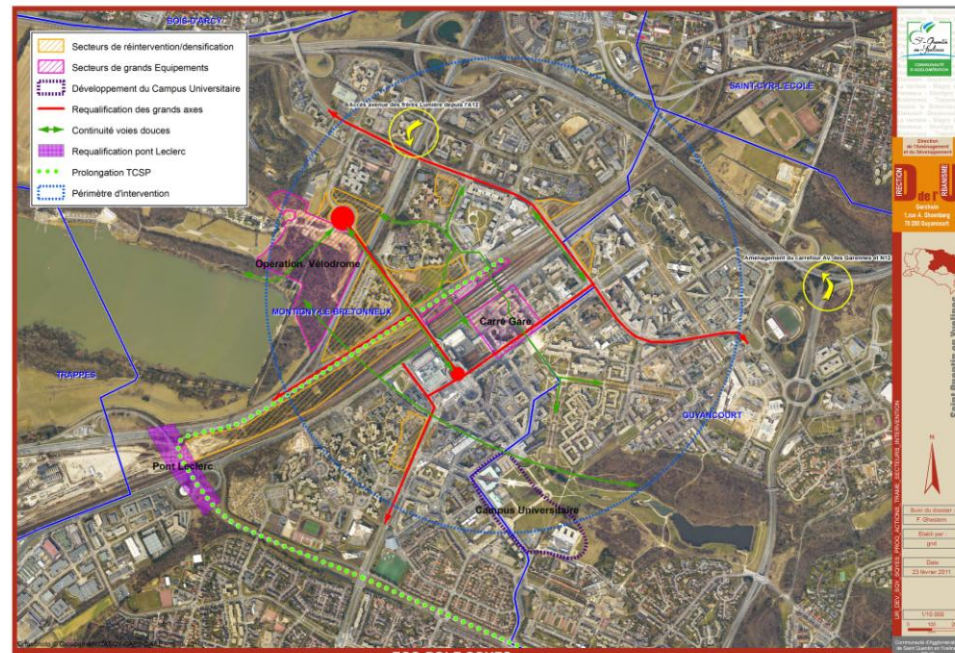
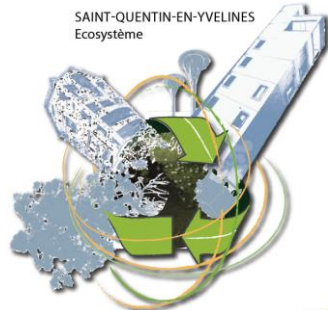


Photo aérienne et programme d'actions

Experiment new mobility systems in Versailles - Saint-Quentin en Yvelines

- ⦿ Multimodal information platform
- ⦿ TWIZ&CO : Electrical carsharing service
- ⦿ Dynamic carpooling
- ⦿ Dedicated lanes for wide or narrow gauge buses, carpooling services
- ⦿ Automatic shuttles in Satory “car free” micro-neighborhoods (Versailles Grand Parc)
- ⦿ Value Aided Services parking



Urban Living Lab

- © **Urban Living Lab** supports innovation to **invent tomorrow city** from the existing city and town into sustainable **low carbon and high quality of life**. It supports the key role of cities to change **lifestyles, production, consumption and environmental structures**.



Urban Living Lab

Versailles . Saint-Quentin-en-Yvelines

Urban Living Lab Territories

📍 St-Quentin-en-Yvelines



Urban Living Lab Territories

© Versailles



Site Pion

06/05/2011

Site Satory



Looking for partners ?

FONDATERRA

Marie-Françoise Guyonnaud

Marie-Francoise.Guyonnaud@fondaterra.com

Tel : 00 33 (0)6 13 21 19 23

Tel : 00 33 (0)1 39 25 41 96